



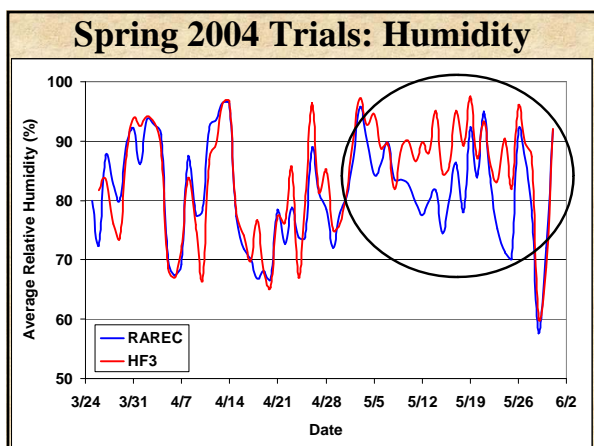
Tomato Experiments To Date:

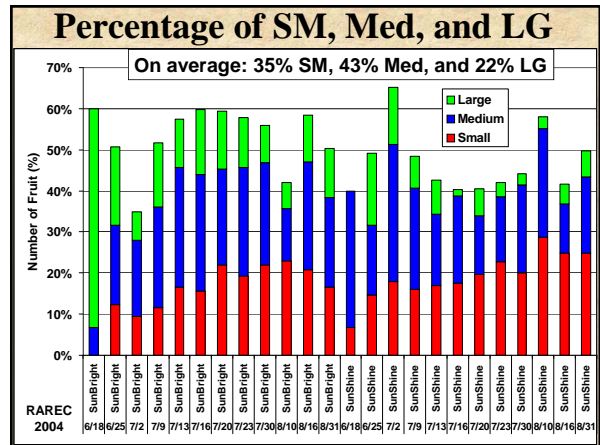
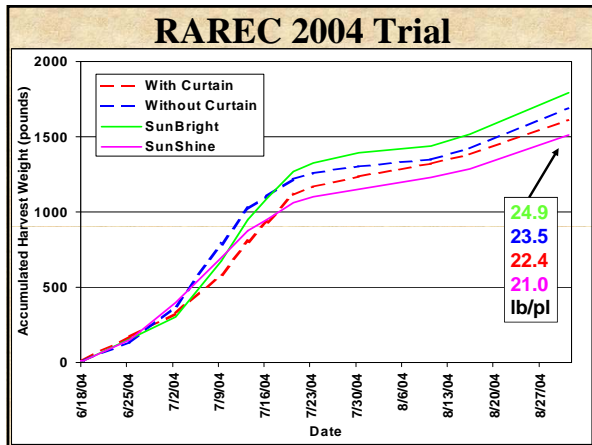
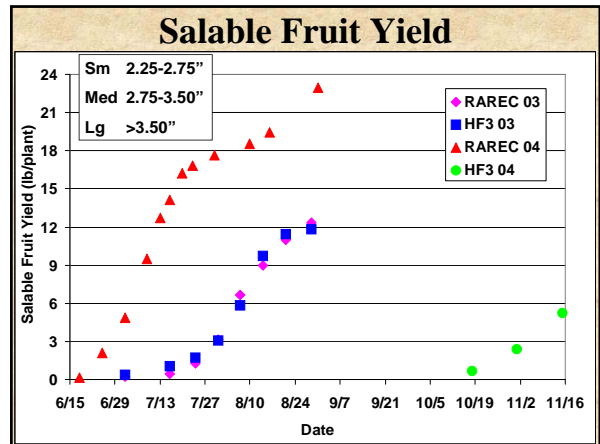
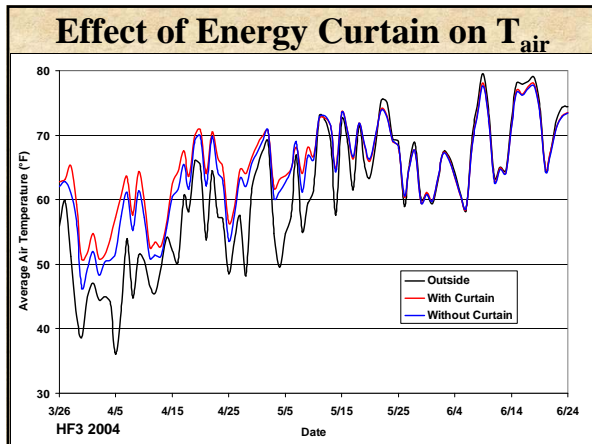
<u>2003:</u>	Transplant	Final Harvest
Spring RAREC	May 1	August 29
Spring HF3	May 5	August 29
Fall	September 15	November 25*

<u>2004:</u>		
Spring RAREC	March 25	August 31
Spring HF3	March 26	June 29**
Fall HF3	August 3	November 15

*terminated (frost); **terminated (white mold)

- ### Potential Causes of White Mold
- Spring experiment (New Brunswick):
- Inadvertent double dose of fertilizer
 - Plants were not suckered
 - Reduced the ventilation to increase temperature
 - As a result: lush canopy and humid environment
 - Ideal conditions for white mold
 - In addition: potential plant hosts nearby
- Attempted to solarize (heat sterilize) the tunnels:
- No white mold detected during fall experiment





- ### Summary of Preliminary Results
- High tunnels with mulched beds provide significantly higher soil and air temperatures
 - Sunbrite had significantly yield fruit yield than Sunshine
 - Little difference in soil temperatures under the differently colored mulches
 - Tunnel orientation did not significantly impact average light transmission (~75%)
 - The NJ growing season is too short for two consecutive full-term high tunnel tomato crops

