

My Experience with High Tunnels in New Jersey

Bob Muth
Muth Family Farm
Williamstown, NJ

Introduction





Current High Tunnel Production
2008

- 2 – 14' X 200' for Strawberries followed by Grafted Heirloom Tomatoes for fall harvest
- 2 – 17' X 200' Heirloom tomatoes for summer harvest
- 3 – 20' X 200' (2) for grape and cherry tomatoes (1) for raspberry production
- 2 – 17' X 150' for cut flower production



Why Tunnels???

- Earlier and later production
- More consistent harvest
- Higher quality
- Consistent work for labor crew
- Get in and stay in a "top end" market

Timeline for Movement of Tunnels

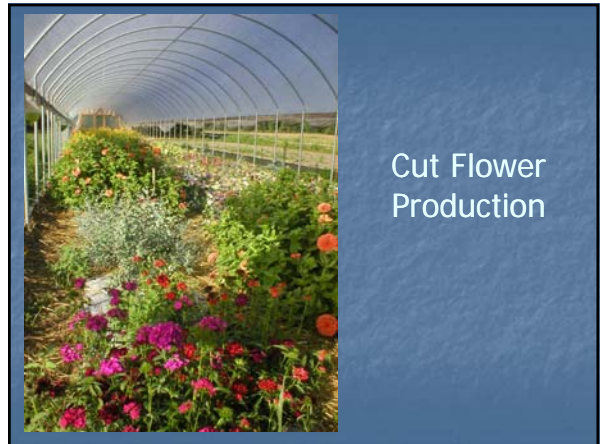
- 2 Years with Tomato Grafting 3 years, but no more than that

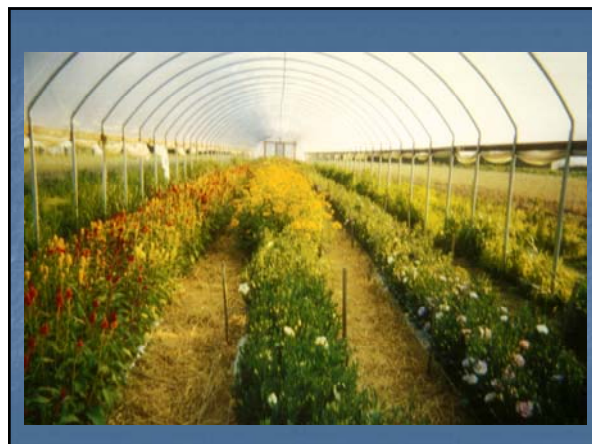
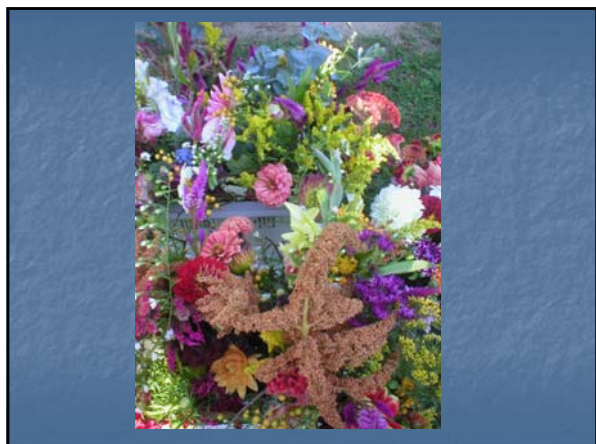
Heirloom Cherry Tomatoes



Heirloom Round Tomatoes







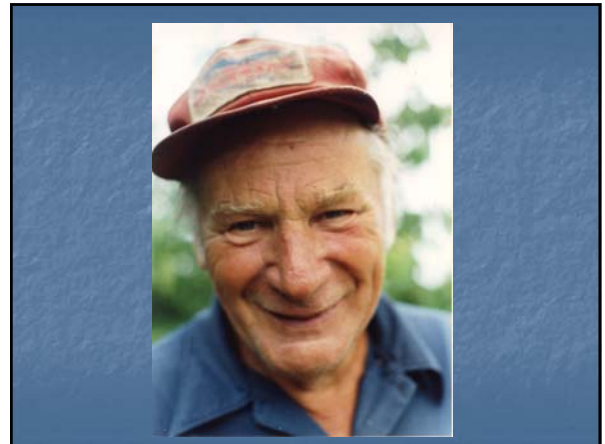
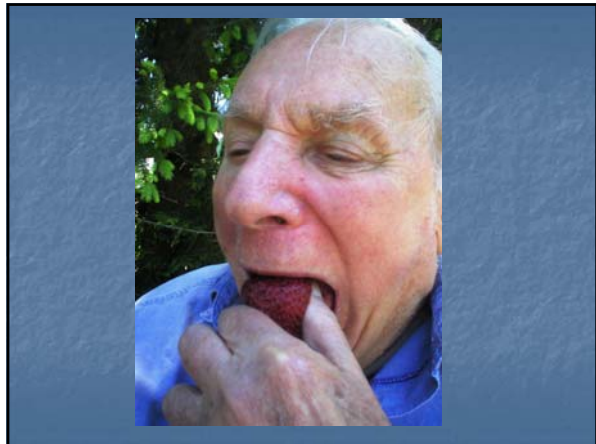
High Tunnel
Strawberry
Production



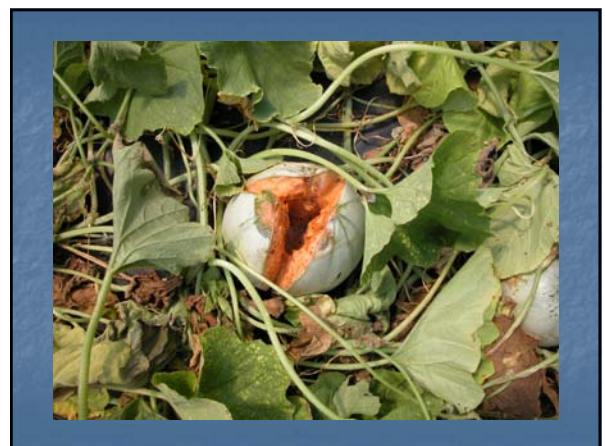
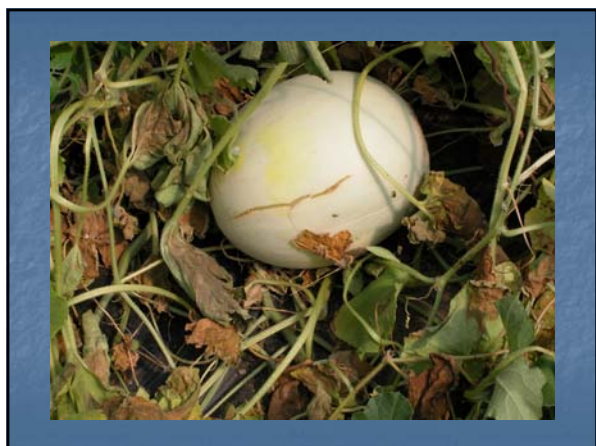
Pollination is Key

- Use honey bees and bumblebees
- Practice overkill
- Short window for pollination





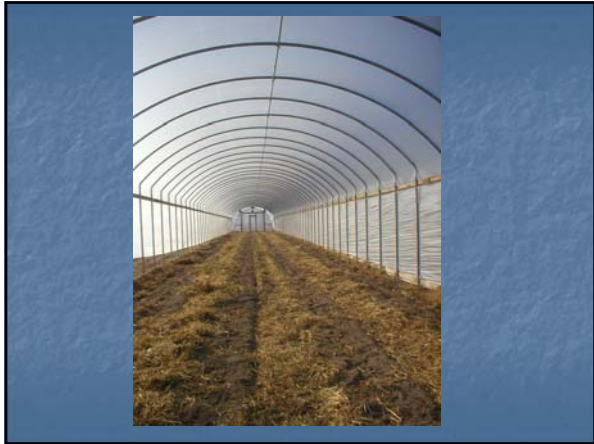
High Tunnel Melons



Farmer High Tunnel Manufacturer

- Local to South Jersey Area
- Long time farm family since 1840's
- 6th Generation





Testing

- Soil test (double check with Rutgers and A&L)
- Soluble Salts test

Amendments

- Apply leaf compost
- Fertility added based on soil test recommendations
- Wet the Floor and lay plastic with double drip tape on each bed

