


# Eggplant Variety Trial at Lincoln University

Presented by: Theresa Blank  
Lincoln University


This afternoon...

- Background information
- Cultural and growing information
- Common pests and problems
- What we did and results



## 2008 Garden plants of the year

- Vegetable – Eggplant
- Flower – Rudbeckia
- Herb - Calendula



- \*Grown World-wide
- \*International cuisines
- \*Colors
- \*Shapes



## Origins

- China
- Middle Ages
- Reluctance
- Louis XIV



## US introduction

Thomas Jefferson

Monticello

Immigrants & respective cuisines



### What's in a name?

- \**Solanum melongena*
- \*John Gerard
- \*Swans egg
- \*Garden egg



### Botanically...

- \*Herbaceous
- \*Deep taproot
- \*Solanaceae family
- \*Classifications
- \*Flowers



### General information

- \*Soil preference
- \*Crop rotations
- \*Soil preparation



### Seeds

- Good quality
- Transplants
- Direct seeding not recommended



### Growing the transplants

- \*Midwest guide
- \*Optimum temperature
- \*Hardening off
- \*Average daily temperature
- \*Cold sensitivity
- \*No drought



### More...

- No rain
- Good response to irrigation



## Harvesting information



- Cultivar
- Firm & glossy
- Cutting stem
- Good quality
- Careful handling
- Pre-cool
- 90% humidity

## Fertilizer requirements

- $\leq 3\%$  organic matter 60 pounds/acre N
- $\geq 3\%$  organic matter 40 pounds/acre N
- 0 to 200 pounds/acre P
- 0 to 200 pounds/acre K
- Sidedress 40 to 60 pounds/acre N to either side of row w/black plastic



## Planting the transplants



- 2 – 3 feet apart
- 6 ounces starter fertilizer
- Plastic mulches & drip irrigation
- Clear = earliness
- Opaque = summer planting

## Diseases



- Cultural practices
- Verticillium wilt
- History
- Long rotations
- Others
- Guide

## Pests

- Flea beetles
- Colorado potato beetles
- European corn borers
- Cutworms
- Spider mites

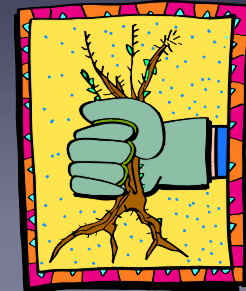


## Weeds!

Mechanical control & hand weeding

Black plastic mulch

Limited herbicide options



### What we did...

- Easter Egg
- Black Beauty
- Classic
- Lavender Touch
- Fairy Tale Hybrid
- Calliope
- Nadia
- Twinkle Hybrid
- Orient Charm
- Machiaw
- Rosa Blanca
- Beatrice
- Florida Market
- White Tango
- Green Raveena
- Fairy Tale
- Snowy
- Italian Galine
- Mangan
- Clara
- Dancer

### Sowing & Transplanting

April 8

Following germination


Mid-May

Treatments



### Planting

- Central Missouri rain
- Raised rows
- 24" apart
- As needed



### Staking

1"x1" stakes

Advisable

Observations

Mondays & Thursdays



### Harvesting

July 10

Middle 8

Fruit & Weight



### Other comments

- All varieties
- Weed control
- Initially
- Round-up
- Holes

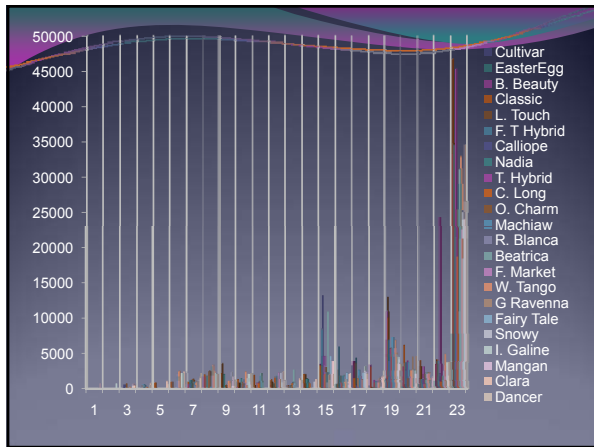


### Total weights in grams


- Easter Egg 7,826
- Black Beauty 33,221
- Classic 46,644
- Lavender Touch 34,657
- Fairy Tale 34,378
- Calliope 22,767
- Nadia 21,392
- Twinkle Hybrid 45,238
- Chinese Long 18,728
- Orient Charm 25,324

### More weights

- Machiaw 28,892
- Rosa Blanca 10,896
- Beatrice 31,030
- Florida Market 22,514
- White Tango 32,749
- Green Raveena 21,151
- Snowy 24,885
- Italian Galine 23,884
- Mangan 24,005
- Clara 34,389
- Dancer 26,468




### Miscellaneous Results




- Peak harvest time of July through August
- Maximum harvest of 433 pieces fruit and 75,379 grams on August 28

### Other results



- 7/10 – Mangan
- 7/14 – Italian Galine
- 7/17 – Calliope, Orient Charm, White Tango and Clara


### More . . .



- July 27 – Classic
- July 31– Rosa Blanca, Beatrice, Florida Market, and Snowy
- August 4 – the rest

Plans for coming season

- Classic
- Twinkle
- Lavender Touch
- Clara
- Black Beauty
- White Tango
- Beatrice
- Machiaw
- Orient Charm
- Mangan
- Snowy
- Italian Galine




With that

Are there questions?



2009 Plants of the year

- Vegetable = Greens
- Flower = Nicotiana
- Herb = Bay Laurel



Thank you

Under direction of Dr. Sanjun Gu, State Horticulture Specialist

Assisted by Student workers  
Tanisha Lawrence  
Keniesha Jones

